

STATELY



Residential Collection



*For details of our environmental policy and other details
please see our website www.stately-albion.co.uk*

Welcome to Stately-Albion
Europe's longest established manufacturer of park homes

For over 50 years we have been designing and building park homes to the highest standards. Stately-Albion has led the way in industry innovation, always keeping the customer uppermost in mind.

At Stately-Albion we try to think of everything you will need to make your new home as comfortable as possible. For starters, all our homes have double glazing, plywood floors, central heating, high levels of insulation and a tiled roof as standard.

After that the choice is yours, with a huge range of interior fittings and furnishings to choose from. We can help you with your choices and guide you through the exciting range of colours and fabrics in curtains, carpets and furniture. In addition, you will have the fun of fitting out a new kitchen exactly to your needs. Then there are all the other finishing touches which go to make not just any old home – but your home.

Stately-Albion have their own Customer Care Department and all registered homes with The Gold Shield Scheme have a ten year insured warranty.

4-7

The Tredegar

8-11

The Tredegar
Contemporary

12-15

The Goodwood

16-19

The Badminton

20-23

The Balmoral

24-25

The Chatsworth Silver Single

26-29

The Chatsworth Silver Twin

30-33

The Chatsworth Gold

34-37

The Chatsworth
Platinum Contemporary

38-41

The Chatsworth
Crystal Single

42-45

The Topaz

46-49

The Cardigan

50-53

The Woburn

54-57

The Pembroke

58-61

The Windsor

62-65

The Wentwood

66-69

The Raglan

70-71

Bespoke Homes

*When it comes to experience in the park home industry,
no one can match Stately-Albion.*

The Tredegar

Our extremely popular Tredegar home combines an exceptional build quality with the utmost style and elegance



The Tredegar is the core of Stately-Albion's success. In the Tredegar there is no compromise between comfort, style, elegance and cost. From 10' to 22' wide in a layout to suit your lifestyle.

As always Stately's sales team will be glad to help you make your selection of which one is right for you. The current range includes as standard, canopies over the bay windows, a long life tiled roof, double glazing, UVPC windows and doors, top opening fan lights to the kitchen, bathroom, lounge, diner and bedrooms.

The fully fitted kitchen comes with a built in oven and hob with an integrated extractor hood over. The homes are fully furnished throughout to our usual high standard.

Some of the less glamorous features which are essential to make a home complete include, plywood floors, smoke alarm and carbon monoxide detector, wallpapered walls and ceilings edged with decorative coving. An extractor fan is fitted to the bathrooms and ensuites. A wall mounted cost efficient combination boiler / central heating system is fitted as standard.

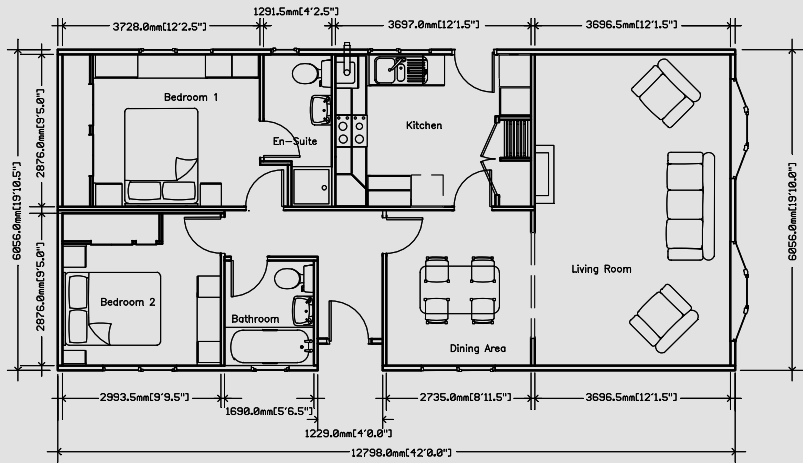


The Tredegar is acclaimed as one of the finest 'value for money' homes on the market.

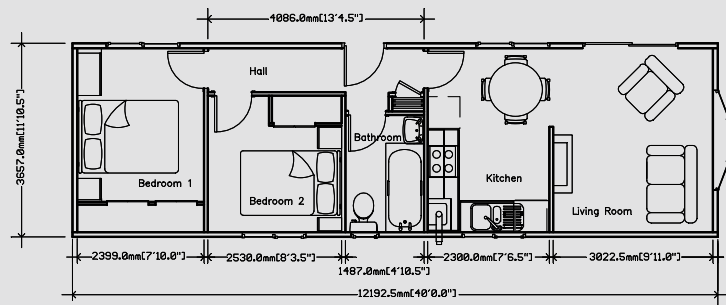




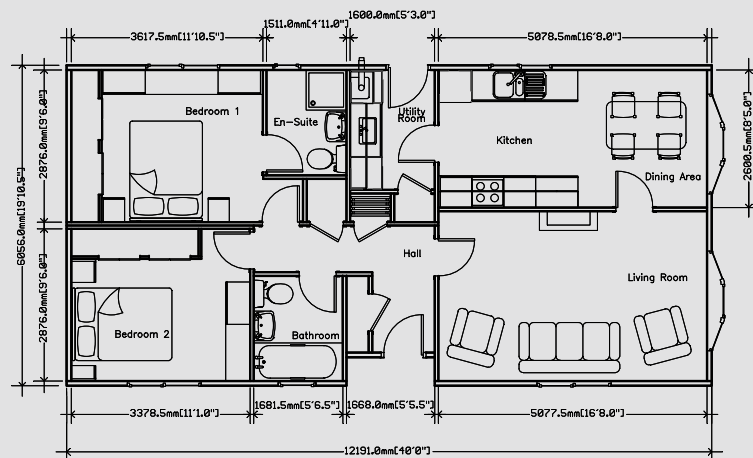
The Tredegar Twin (Cross Lounge) 42 x 20



The Tredegar Single 40 x 12



The Tredegar Twin (Side Lounge) 40 x 20



An example layout, more layouts available upon request



The Tredegar

Contemporary

A modern approach to the Tredegar's ageless charm and appeal with state-of-the-art design



The Tredegar is one of our longest running and most popular home designs. The contemporary adds a modern feel to this timeless home, featuring our newly designed brick slips, and gable design, which are included as standard additions. The kitchen takes the practical Tredegar design, but adds tiling from the

worktop to under top lockers, the option of high-gloss doors, integrated fridge/freezer, washing machine and dishwasher.

The bedroom furniture has also been upgraded and allows you to choose from an extended range of colour and design options.

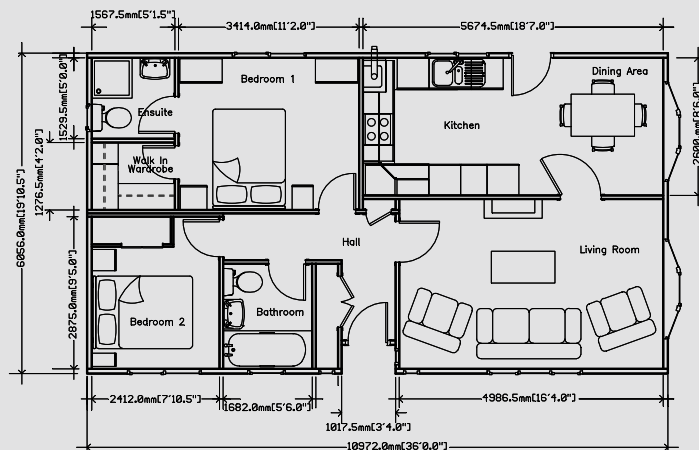


Leading-edge designs make the contemporary a beautiful, yet functional living space.



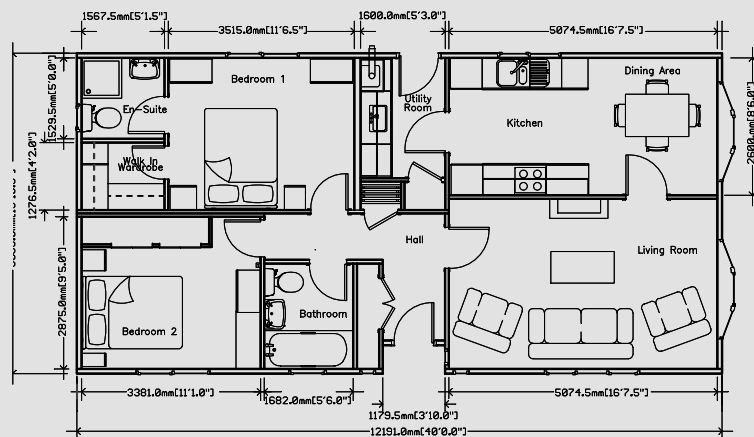


The Tredegar Contemporary Twin 36 x 20





The Tredegar Contemporary Twin 40 x 20



*An example layout,
more layouts available
upon request*

The Goodwood

A clever use of the latest design techniques to create a light, radiant atmosphere with surprising spaciousness



Taking up residence in the Goodwood represents an entirely new experience, because it means moving into a complete home - complete, that is, with all furnishings, carpets, curtains and classically designed decoration, to suit the taste of the proud owner.

The Goodwood is available in a choice of sizes - all perfectly proportioned to create a light, airy ambience and more space than you would expect.

A thoughtful touch too, as well as being a design feature, is an arched entrance porchway above the patio doors to the lounge - ensuring that inclement weather remains firmly on the outside.

Available in a choice of exterior colour finishes, the property is topped by a long-life tiled roof, also in a choice of shades, above an insulated loft, which, along with high-grade insulation throughout the Goodwood, ensures minimum running costs for the gas central heating system.

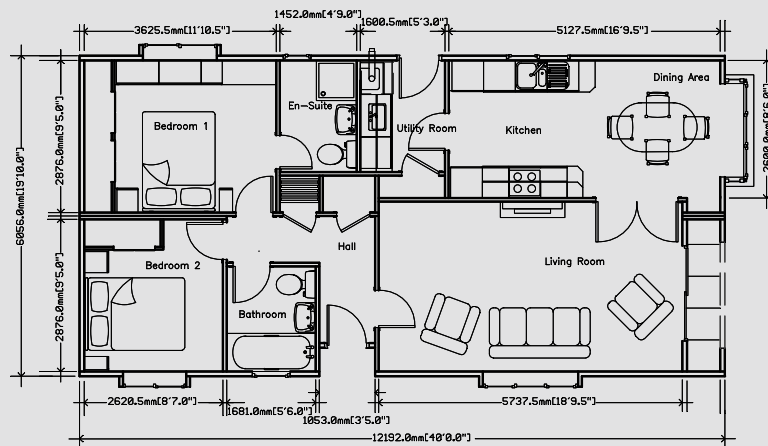


*Our designers have ensured that you move into a complete home,
with a superior level of style and character*



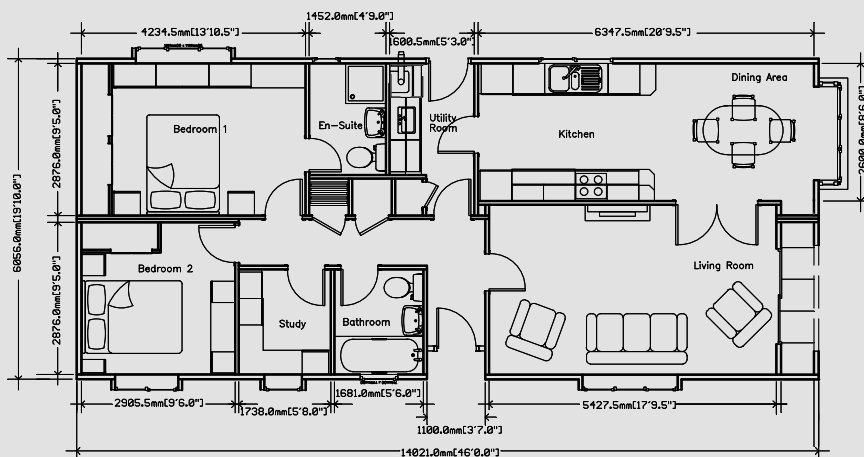


The Goodwood 40 x 20





The Goodwood 46 x 20



*An example layout,
more layouts available
upon request*

The Badminton

Always in demand, the Badminton's reputation as being a triumph of blissful living continues to grow



In answer to customer requests Stately-Albion have now developed the highly sought after Badminton range. Some subtle but effective new features have allowed our designers to produce a home that looks truly unique. The exterior benefits from stylish mock window shutters whilst incorporating an aesthetically pleasing and practical covered area above the front door. The Badminton's open plan lounge-diner maximises the potential for space, whilst

the kitchen has all the amenities required in a modern household. With your comfort in mind, the master bedroom boasts a much welcomed ensuite and walk-in wardrobe.

A lot of thought has gone into the design and build of the Badminton range to maximise its potential. So much so that the home works well in a variety of sizes.



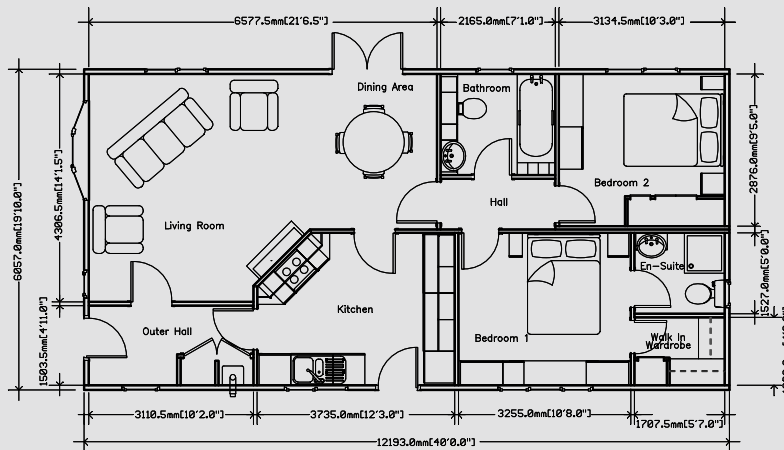
The Badminton is truly a distinctive and superior home which is sure to appeal to a wide range of tastes.



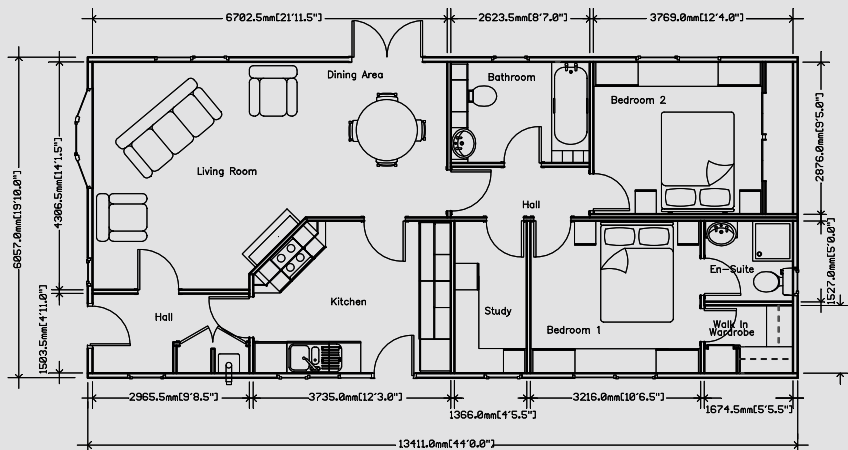




Badminton 40 x 20



Badminton 44 x 20



*An example layout,
more layouts available
upon request*

The Balmoral

A beautifully traditional home equipped with all the comforts of modern day living



Externally, the Balmoral benefits from Georgian style glazing, plus a roof with a gabled overhang which provides a covered porch area. Coach lamps and cornerstone details add character and charm, whilst the front door has a feature glazed panel at one side.

A feeling of light and spaciousness greets you the moment you enter the Balmoral. The colour scheme is modern and cool, using restrained 'minimalism' as its inspiration. Creating an attractive focal point right at the heart of the living room is a new deluxe cream stone effect fireplace. Its log effect electric fire gives the appearance of living flame at the touch of a switch.

A well proportioned shower room leads off the hall and is fitted with a corner opening shower, WC and basin. The largest bathroom in this home is reserved for the ensuite to the master bedroom.

Luxuriously furnished with a corner bath, it also has a feature new to Stately-Albion homes - a run of high-gloss, white fitted cupboards which conceal the cistern and provide useful vanity storage around the basin. A mirror door bathroom cabinet with fitted lights is supplied above the basin and there are recessed spotlights in the ceiling.



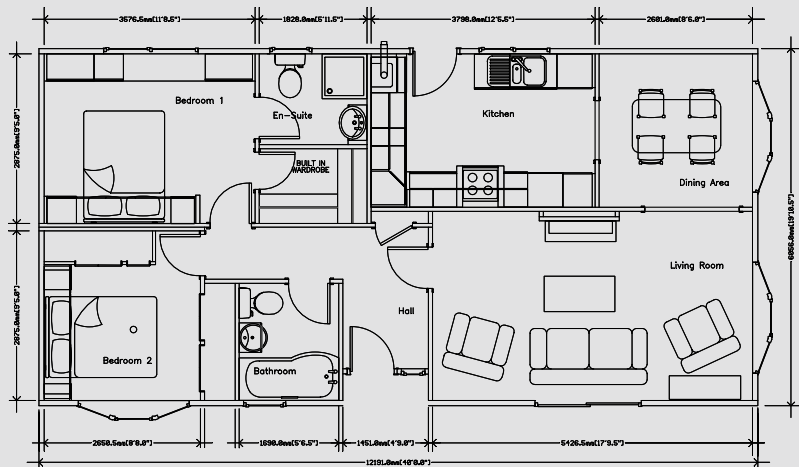
Designed to incorporate fresh new design ideas, plus all the most modern features for 21st century living



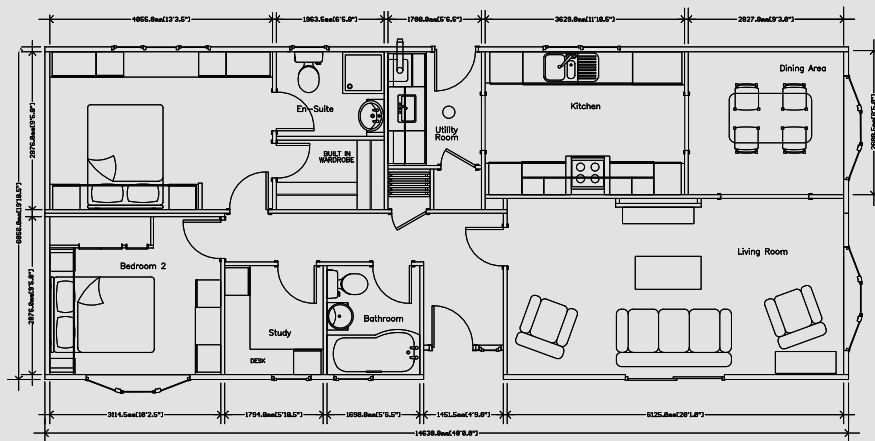




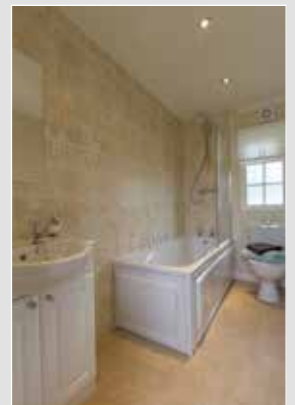
The Balmoral 40 x 20



The Balmoral 48 x 20



An example layout, more layouts available upon request



The Chatsworth

Silver Twin

The Chatsworth Silver has been devised from the ever popular Chatsworth Classic.



As always Stately-Albion have designed a pleasing yet practical home that is sure to suit even the most discerning client.

From the spacious entrance hall, you proceed into an extremely well planned home.

The kitchen enjoys integrated appliances, and illuminated display cabinets. You may have a choice of kitchen units from our extensive range, along with a large selection of worktops and floor coverings.

The lounge has the advantage of bay windows to three elevations, with an attractive fire suite. Maybe you would choose to situate your television above your fire? Just let our sales staff know.

The details of what is important to you, have always been important to Stately-Albion. If you have any particular request, we are always ready to listen and help where we can.

The bedroom has a sophisticated range of bedroom furniture and overhead lockers for extra storage. The ensuite also combines a vanity unit for all your bathroom requirements.

Our helpful sales staff are always available to help you select your interior soft furnishings to compliment your new home

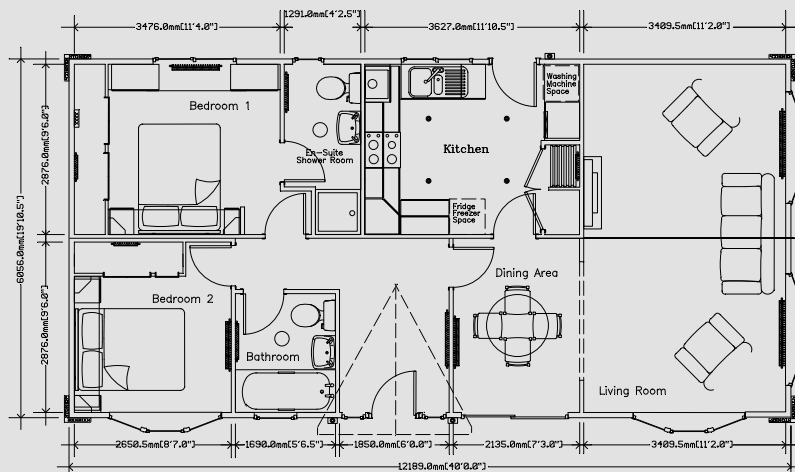


Developed from ideas and inspiration gained by listening carefully to customers



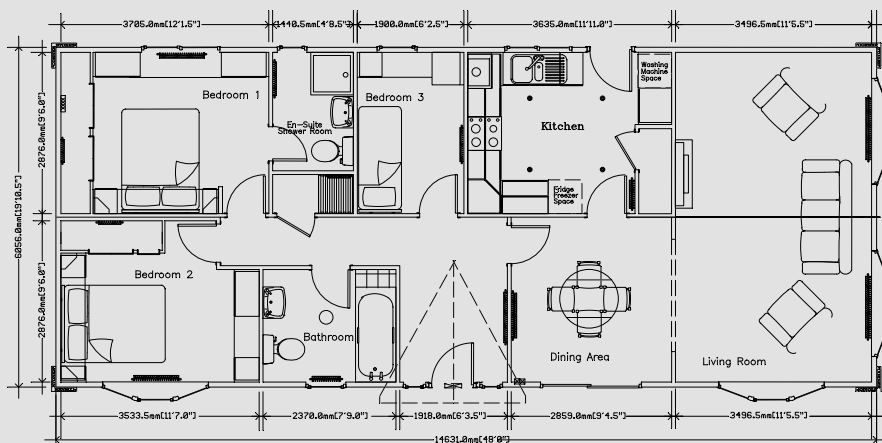


The Chatsworth Silver Twin 40 x 20





The Chatsworth Silver Twin 48 x 20



*An example layout,
more layouts available
upon request*

The Chatsworth

Gold

A home bathed in light, the Chatsworth Gold is where one can enjoy peace and tranquility with unrivaled luxury



The Chatsworth Gold is a classic design long associated with Stately-Albion. The Gold has an elegant design bringing light into the home.

Externally the Gold benefits from two long bay windows to the side elevation in addition to the two standard bays to the front, which

are enhanced by Georgian glazing. You also have a choice of high gloss kitchen styles and accompanying fittings.

You will be pleased to know that we now fully integrate your kitchen as standard.

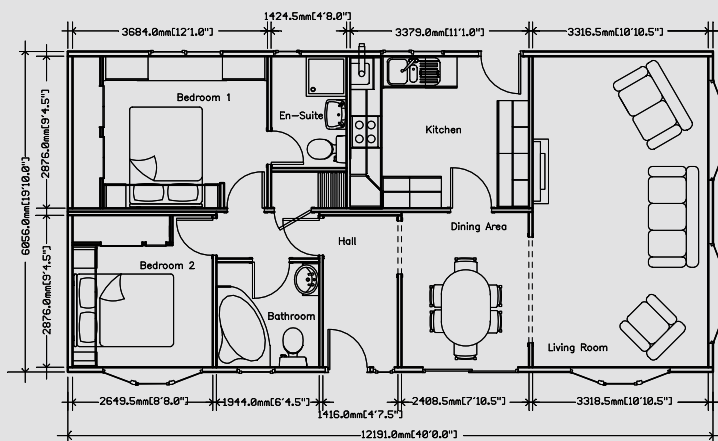


Designing and building customer-focused homes has always been one of Stately-Albion's top priorities.



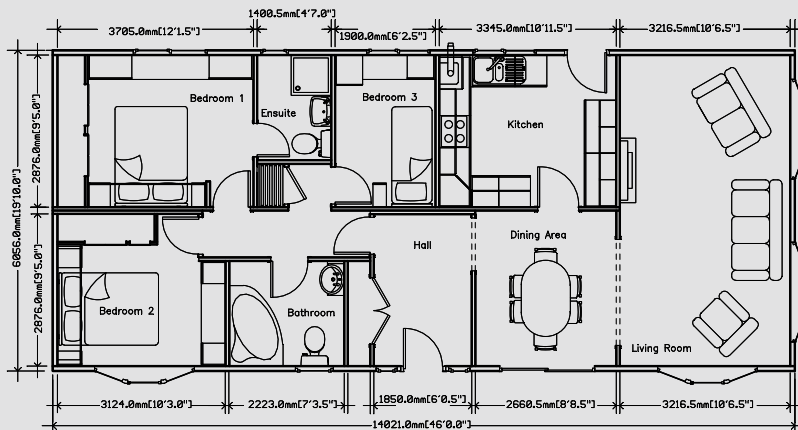


The Chatsworth Gold 40 x 20





The Chatsworth Gold 46 x 20



*An example layout,
more layouts available
upon request*

The Chatsworth

Platinum Contemporary

A delightfully fresh interior design with an abundance of comfort and stylish living for the proud owner



The Platinum Contemporary builds on the success of the Chatsworth range, offering modern exciting décor with a touch of indulgent luxury.

The design of the Platinum Contemporary revolves around the kitchen and bathroom.

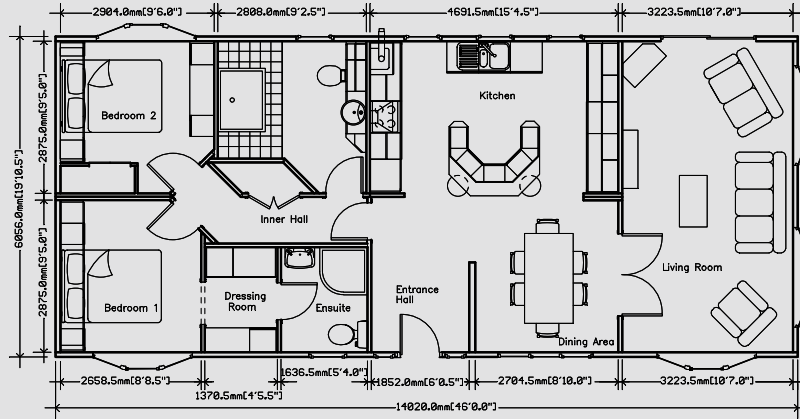
The kitchen is a bold example of modern living. Spacious, light and equipped with integrated fridge/freezer, dishwasher and washing machine. Vaulted ceilings to the lounge, kitchen and diner emphasise the light and airy feel of this home. A choice of tasteful colour schemes are available.



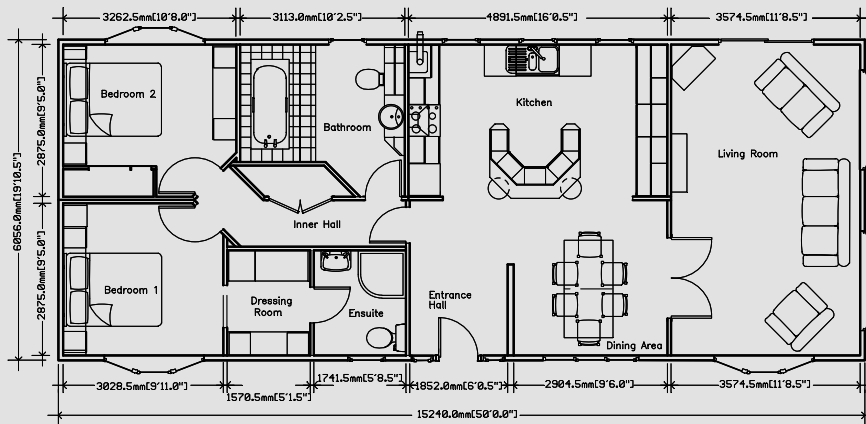
The Platinum Contemporary has all the ingredients for the superior living experience.



The Chatsworth Platinum Contemporary 46 x 20



The Chatsworth Platinum Contemporary 50 x 20



*An example layout,
more layouts available
upon request*



The Chatsworth Crystal

Single

Designed with our customers' needs and desires of paramount importance, the Crystal Single is a winning combination of thoughtful construction and stunning features



In addition to the twin version of the Chatsworth Crystal Twin home, Stately-Albion are pleased to present the 14' single width Crystal.

With all the style of her sister home, the designers have ensured that the single has not compromised on opulence or comfort. We at Stately-Albion know that you have come

to expect the highest standard from us, and with this home we have met your expectations. As with the twin home we understand that an impressive exterior is important, therefore we have placed three exterior gables to the front elevation. We have also included two long bay windows and the chrome Georgian glazing.

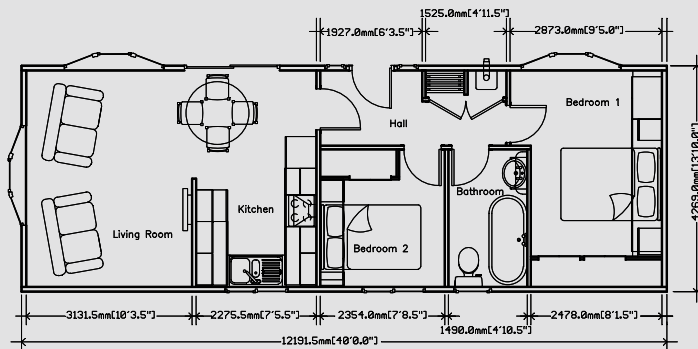


*The perfect mix
of tranquil and
contemporary
interiors.*

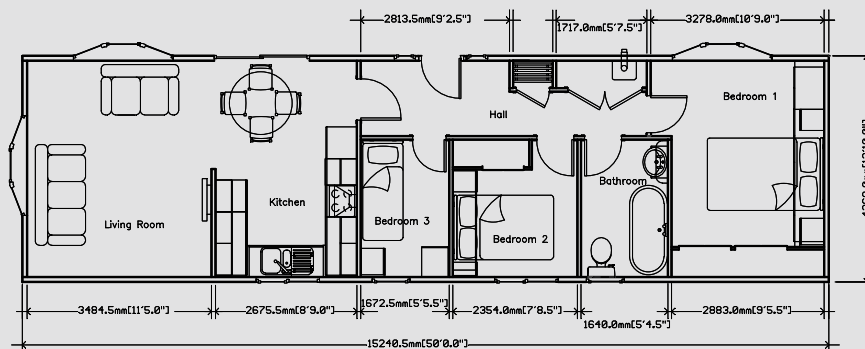




The Chatsworth Single 40 x 14



The Chatsworth Single 50 x 14



An example layout, more layouts available upon request



The Topaz

Our extremely popular Topaz home combines an exceptional build quality with the utmost style and elegance



Divine is the first word you think when you enter the decadent Topaz.

Stately-Albion have designed their finest home yet, where every consideration has been taken with your comfort in mind.

From the grand entrance you will see the ornate kitchen complete with a Range oven and Butler sink, ensconced in granite worktops.

There is a complimenting granite tile floor to enhance the overall grandeur. Plush yet practical, including integrated appliances, with a useful, yet pleasing centre island.

The primary bedroom has a walk through dressing area which also enjoys illuminated cabinets. Granite worktops are also included in your bedroom on the attractive centre island and carries through into the fully tiled ensuite bathroom.

The large family bathroom has not been neglected and is also fully tiled, In keeping with the rest of the home we have included a roll top bath and magnificent vanity unit.

Seeing is believing when you view the new Topaz. We truly have answered all your wishes with the incredibly stylish home.

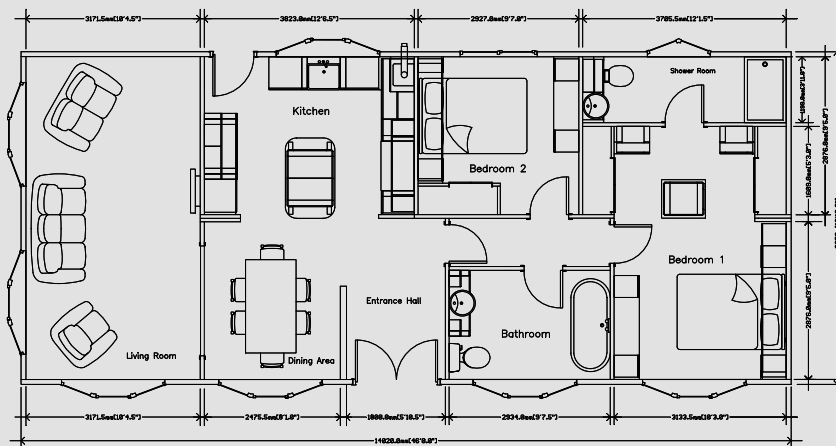


An ideal place to spend time - even if it's just to watch the world go by.



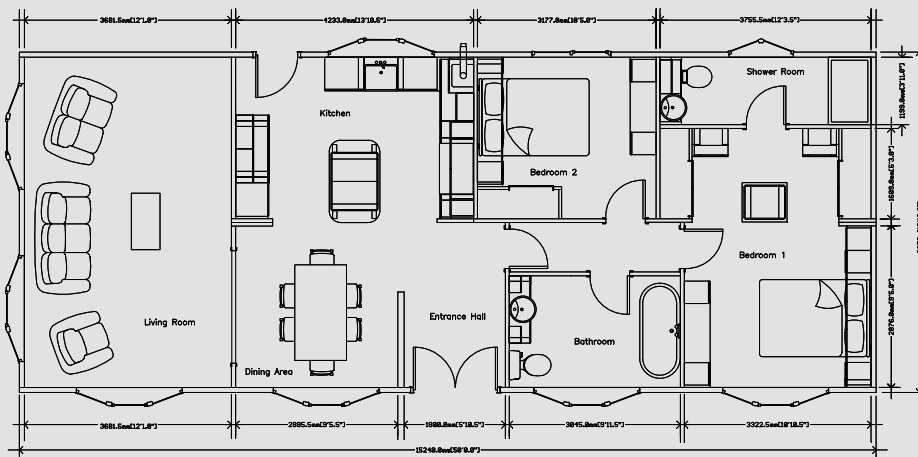


The Topaz 46 x 20





The Topaz 50 x 20



An example layout, more layouts available upon request

The Cardigan

Have you always imagined your own country cottage...



The Cardigan is able to evoke memories of the cottages that are seen throughout the glorious British countryside.

With feature beam ceilings, and Inglenook fireplace, along with your very own range of oven to the kitchen. We have cleverly hidden the dishwasher and fridge freezer by integrating

them into your kitchen units retaining the feel of a country kitchen. The bathroom has a traditional roll top bath and feature tiled wall.

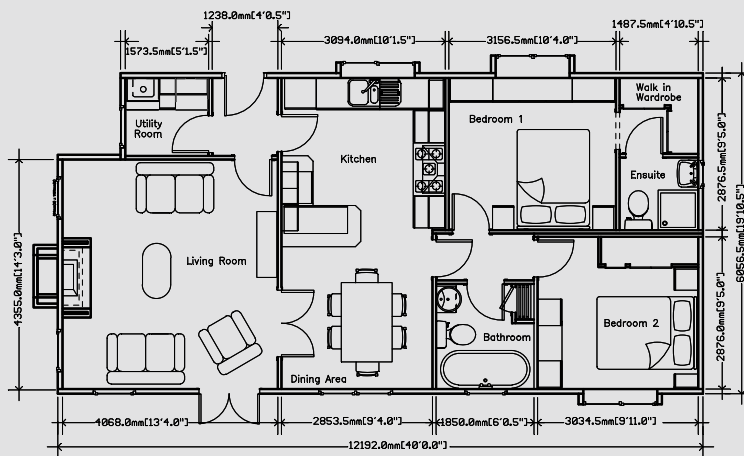
The bedroom units have also been selected from our range to compliment the traditional styles. As always Stately-Albion are able to accommodate your personal requirements.



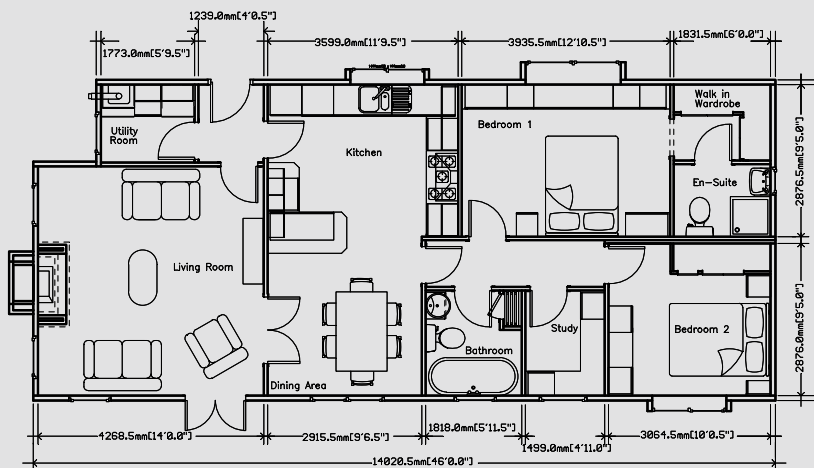
The Cardigan Cottage is able to evoke memories of the traditional English country cottage.



The Cardigan 40 x 20



The Cardigan 46 x 20



An example layout, more layouts available upon request



The Woburn

A great testament to aesthetically pleasing design and well thought out use of space



Unveiled for the very first time at the 2014 National Park and Holiday Home Show, Newbury, we were proud to have exhibited the latest addition to our Residential Park Home range, The Woburn.

Externally, the Woburn is striking with its box bays and inset front door, complemented with feature cladding to emphasise its modern angular shapes.

If fine cuisine is to your liking, then there's no better place to prepare your meals than in the spacious kitchen. Incorporating a well designed

open plan kitchen/diner, keeping your guests entertained whilst preparing your meals becomes an effortless task.

The luxurious bathroom is a desirable space for those relaxing moments when you just want to switch off, relax, and soak in a warm bath under candlelit alcoves.

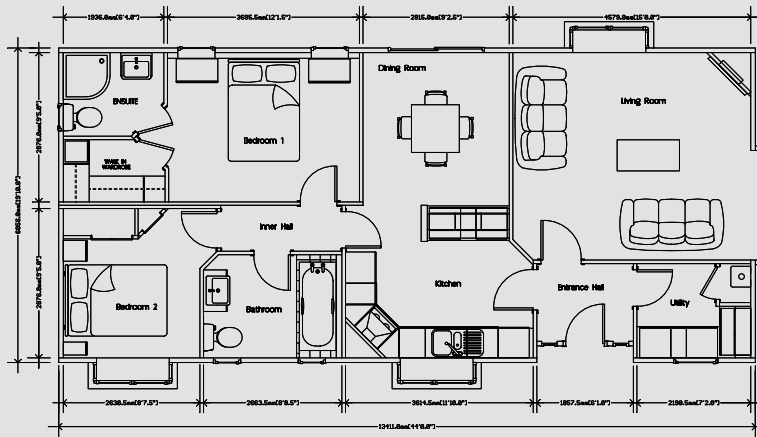
As always our designers have thought about you, the resident, and the practicality and ease of living.



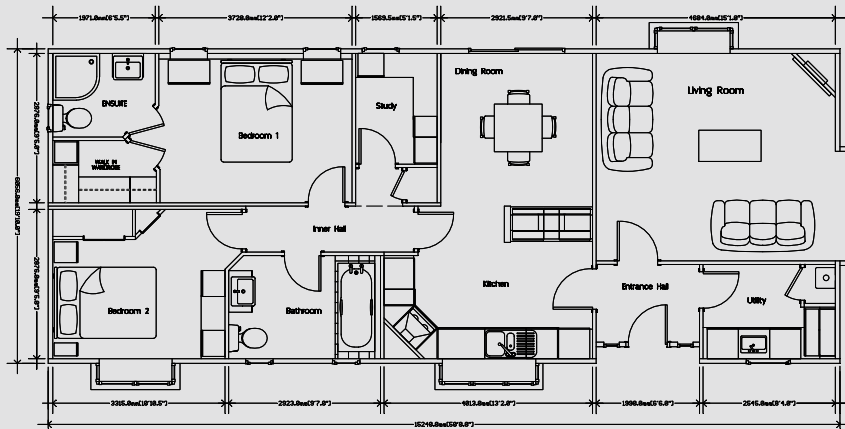
The Woburn is a truly exceptional home for those who seek the perfect place to stylishly unwind.



The Woburn 44 x 20



The Woburn 50 x 20



An example layout, more layouts available upon request



The Pembroke

An intelligent approach to the layout and overall flow of the furnishings and fittings create a remarkable sense of space with an elegant and aesthetically pleasing atmosphere



A modern stylish home the Pembroke has vaulted ceilings to the lounge, diner and kitchen giving the owner a wonderful feeling of space. Using a new range of window design, including velux windows to the roof in the lounge, to amplify the illusion of extra room.

The spacious lounge, with an attractive chaise longue suite, wall unit and coffee table, has a feature window which allows viewing into the dining area. Portico sliding doors separate the dining room from the modern kitchen, which has all the appliances you could wish for to make your life easier.

The cleverly designed computing area will accommodate all your requirements with regards to your technical equipment. The family bathroom with its tiled walls, has a desirable opula bath for your comfort, and a vanity unit with a stylish hand basin. The bright and spacious second bedroom has ample wardrobe and drawers, with hat lockers for that extra storage. The master bedroom has the unusual feature of a dressing room, which in turn leads into the fully tiled ensuite, also complete with a modern vanity unit and quadrant shower cubicle. The new soft furnishing package completes this stylish home.

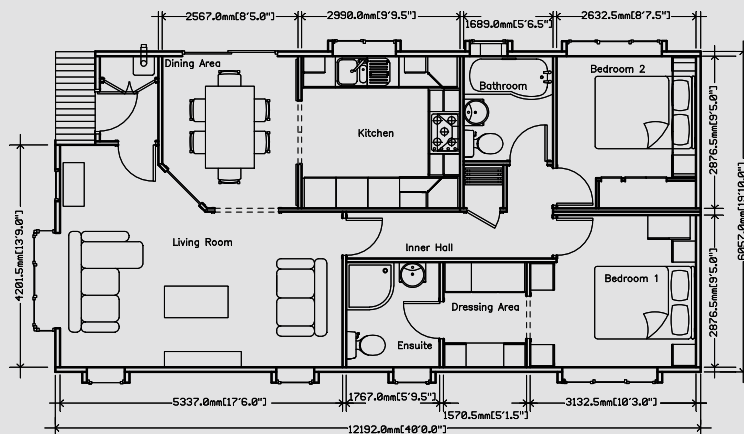


The Pembroke has an innovative approach to space with an intelligent and skillful design to cater for all your technical requirements.



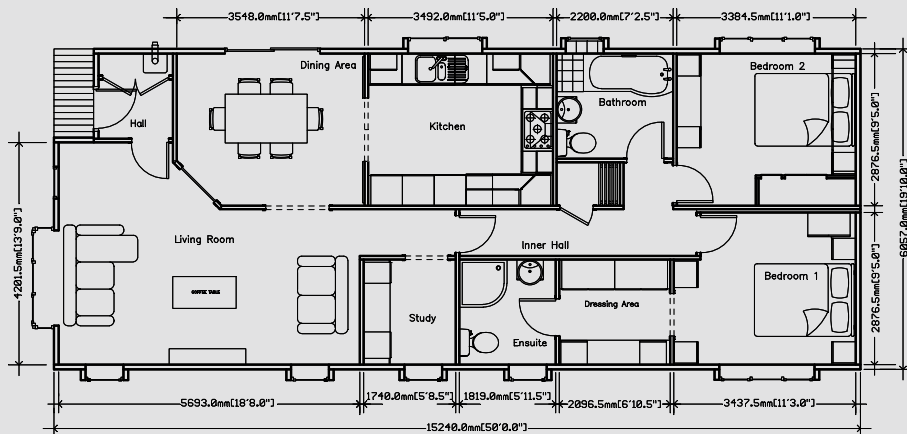


The Pembroke 40 x 20





The Pembroke 50 x 20



An example layout, more layouts available upon request

The Windsor

An intelligent approach to the layout and overall flow of the furnishings and fittings create a remarkable sense of space with an elegant and aesthetically pleasing atmosphere



Just when you thought you had 'seen it all' in a park home, Stately-Albion's designers have once again come up with an innovative design in the new Windsor.

The lounge has an attractive privacy window which leads into the spacious kitchen diner with a beautiful walk in bay window.

The lovely kitchen, which of course includes integrated appliances, leads to a useful utility area and rear entrance door.

We at Stately-Albion pride ourselves in having the best designed homes in today's market and we have always been the leaders. This home proves that once again we have 'got it right'.

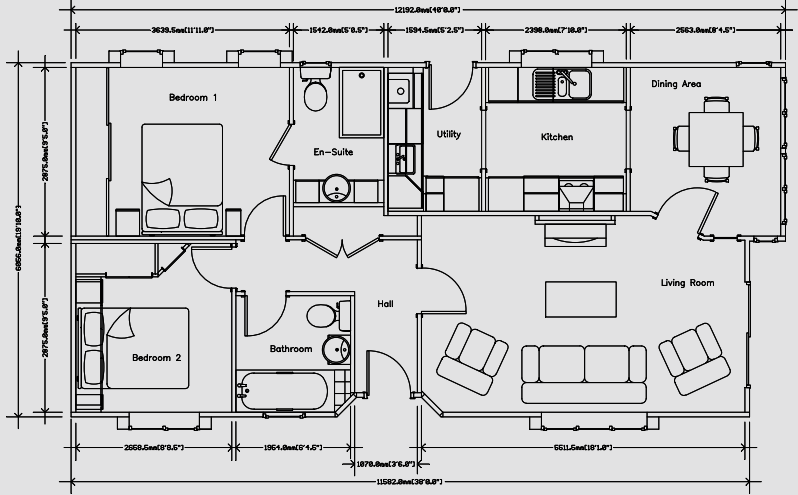
The fully tiled bathroom and ensuite complete with complementing vanities are sure to please you. The master bedroom has lovely sliding wardrobe doors to allow you the maximum storage area, with ease of access. The guest bedroom also enjoys an array of wardrobe and storage space. Beware, your guests may wish to stay longer, as we are sure they will appreciate this glorious home.



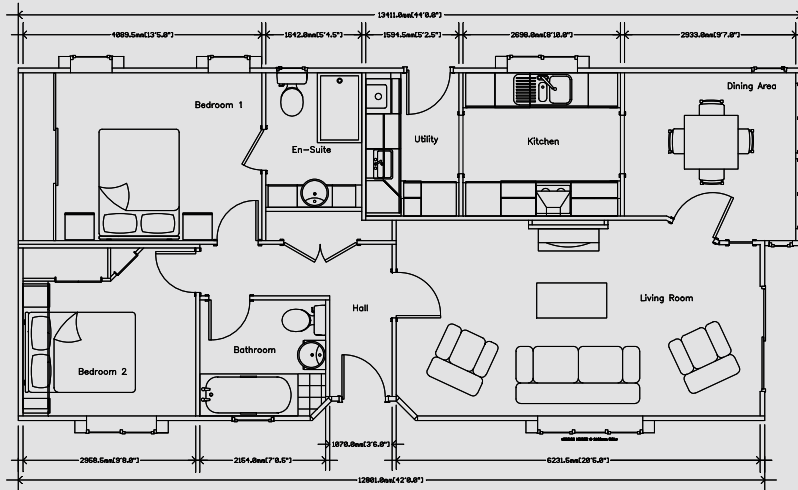
The Windsor meets the needs of the most discerning customers who want nothing but exceptional value.



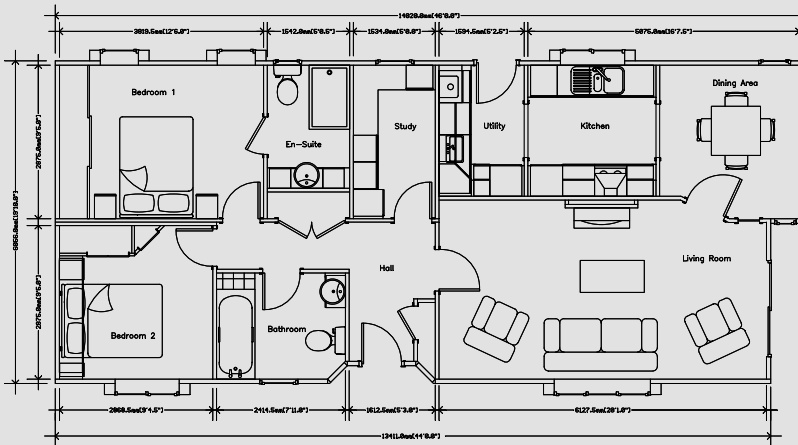
The Windsor 40 x 20



The Windsor 44 x 20



The Windsor 46 x 20



An example layout, more layouts available upon request



The Wentwood

A contemporary stylish home flooded with light designed to bring the outdoors to you



Reacting to changing lifestyles Stately-Albion have designed The Wentwood. A modern home filled with light offering all the comforts of home.

A combination of render and cladding has been applied to the exterior of the Wentwood which helps emphasise its features and defines its character. The interior benefits from a mix of

vaulted and flat ceilings combined with large windows throughout to give you that light and spacious homely feel you have been looking for.

As with all Stately-Albion homes there is a wide range of packages to choose from to help you make your home just the way you would like it to be.

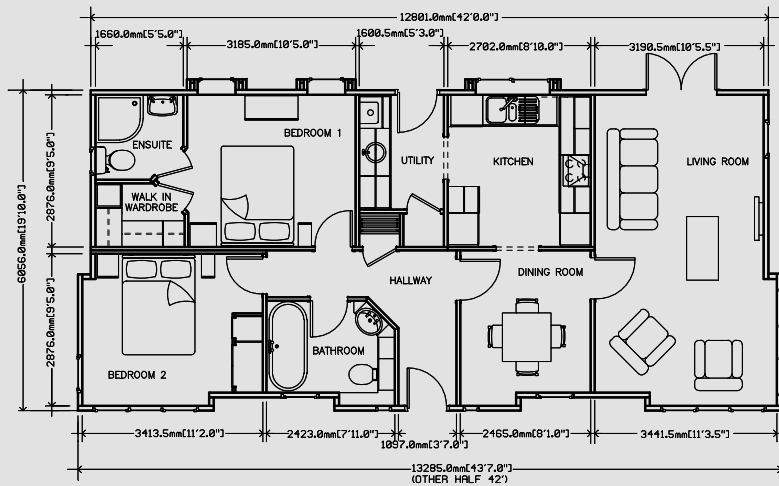


All expectations are exceeded with stunning features and innovative details.

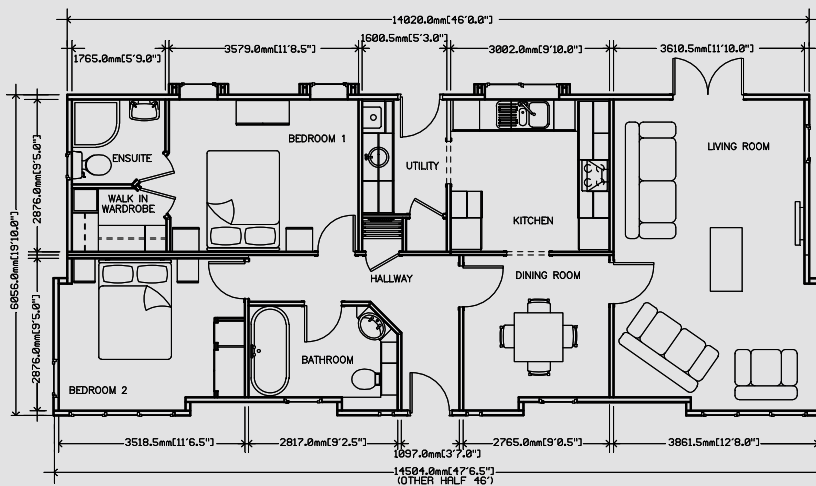




The Wentwood 42 x 20



The Wentwood 46 x 20



An example layout, more layouts available upon request



The Raglan

Opulence is the key word when you contemplate our new masterpiece to the Stately range



As always we listen to you our customers, and what you would like us, the UK's longest established manufacturer, continuously trading since 1963, to do for you.

The grand Kitchen and Diner, is a new twist to our popular Chatsworth range. Integrated appliances are included as standard in the luxurious cabinets. We have included a high level oven and useful pull out storage cabinet all aimed to making your life easier.

The master bedroom, with stylish double entrance doors, gives you a private retreat to

relax and distress from your busy days. The large walk through wardrobe leads to a well designed en suite.

The bathroom is yet another jewel in the Raglan crown. It has a delightful roll top bath with a clever stone effect wall behind it. A tasteful vanity unit completes the picture.

A complimentary furnishing package is included, however, we are happy to accommodate your requirements with regards to individual choices on interior selection. Speak to our sales team to discuss yours.

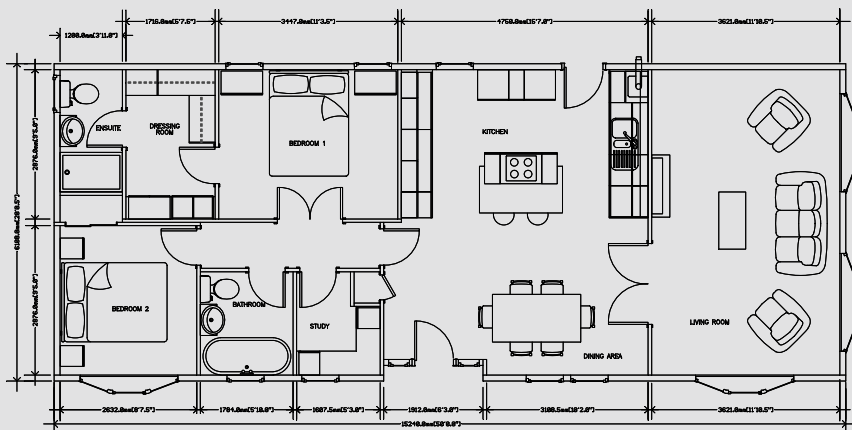


Stately-Albion's extensive experience has been exploited to the fullest to create a home that is truly beautiful and an absolute pleasure to live in.





The Raglan 50 x 20



An example layout, more layouts available upon request



Bespoke Homes

Your home is but a few simple choices away with the ability to modify our homes to your exact taste

Choice and more choice

The choice is huge ... light fittings, switches, door finishes, wallpaper colour schemes, bathroom fittings, and much more. Even the room layouts are variable.

Do you want a utility room, an extra bedroom or a study? Will you have a large kitchen with integrated kitchen appliances? Maybe an extra window or patio door in the lounge? All our homes have fitted wardrobes but how about a walk-in closet? Why not a corner spa bath in the family bathroom as well as a large ensuite shower room? There are so many combinations and options.

You will relish the choice and delight in the decision making – and if you need help, the friendly staff at Stately-Albion are on hand to assist you.

Remember, all our homes are built from modern materials, providing low maintenance with high levels of comfort. All Stately-Albion homes are built to meet the current British Standards 3632 for residential park homes.





Is that power point in the right place? Do I need my television at high level? How about a glazed door leading to the hall?



Welcome to

THE STATELY-ALBION SHOW CENTRE

Stately-Albion would like to invite you to visit their show centre and view the show homes on display.

We are located in the lovely countryside of Clayton West Nr Huddersfield.

On display are six permanently sited show homes, which you may view at your leisure.

There is always a member of staff available to assist you with your enquiries.

You may combine your visit with taking a ride on the Kirklees Light Railway, which is adjacent to the showground.

Light refreshments are also available.

Directions

BY CAR: Clayton West station is situated on the A636 Wakefield to Denby Dale Road, off junctions 38 or 39 of the M1 motorway.

BY BUS: Buses run regularly from Huddersfield, Homfirth, Leeds, Wakefield and Barnsley.

BY TRAIN: The British Rail stations at Denby or Shepley are accessed easily by local buses.

Kirklees Light Railway, Park Mill Way, Clayton West, Nr Huddersfield, West Yorkshire. HD8 9XJ.

Showground direct line: 01484 862741
Fax No: 01484 866333

STATELY



Stately-Albion Ltd, Unit 20, Darren Drive, Prince Of Wales Industrial Estate, Abercarn, Newport, NP11 5AR.
Tel: 01495-244472 Fax: 01495-248939 Email: sales@stately-albion.co.uk

www.stately-albion.co.uk