

Blenheim

Lavish style and copius luxuries are immediately apparent as you enter the Blenheim home



When you venture into our new Blenheim range, you appreciate just how thoughtful and innovative our designers can be.

Stately has raised the level of comfort without compromising affordability. Thoughtfully planned to suit any plot you may choose, the Blenheim comes in a large range of sizes, offering 2 and 3 bedroom layouts varying from 28' x 20' to 40' x 22'.

The fully fitted kitchen, is welcoming yet highly practical, with integrated appliances aimed at making your important leisure time hassle free. The position of the kitchen is the only radical difference between the Blenheim and the Blenheim Outlook. In The Blenheim you may wish to position your kitchen at the front of the home, indeed dishes can be attended to whilst

enjoying the views. Or in the Outlook Stately have provided glorious French doors which open up your living area to the outdoors. The choice is yours, not an easy one we would agree. Throughout the rest of the home Stately have once again provided style and comfort for you to enjoy.

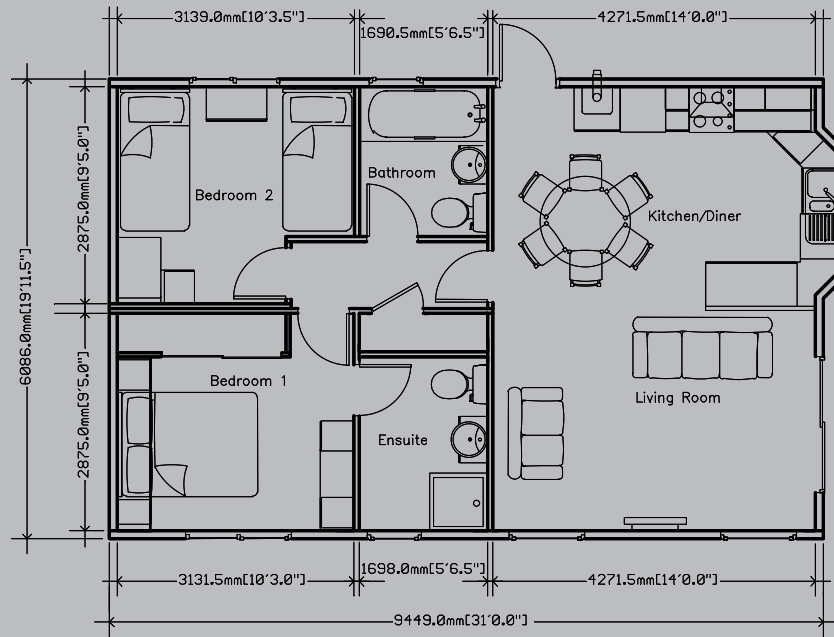
Our colour schemes are soothing yet pleasing. As always we offer a full range of colour schemes for you to make your selection from. Once again Stately have launched a leisure home which reflects their experience as home builders.

Our designers have worked extremely hard to ensure you have nothing but the best in your Blenheim leisure home

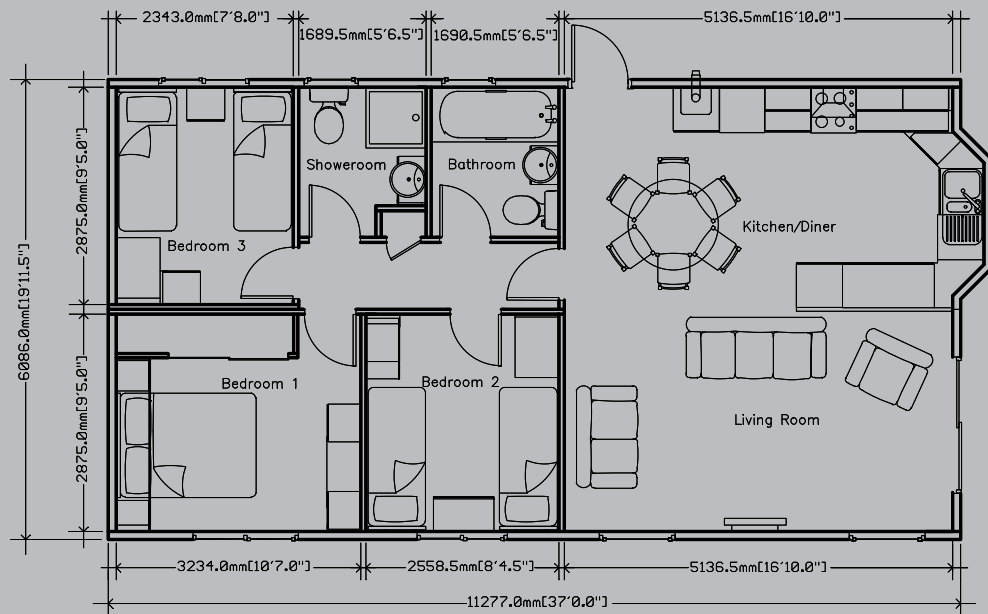




Blenheim 31' x 20'



Blenheim 37' x 20'



An example layout, more layouts available upon request.